



2023

ANNUAL REPORT

MISSION: IMPROVE THE QUALITY OF HEALTHCARE IN OUR REGION THROUGH WORKFORCE DEVELOPMENT, EDUCATION, AND RESOURCES.

VISION: WE ENVISION A FUTURE IN WHICH OUR COMMUNITY IS SUPPORTED BY HIGH QUALITY, ACCESSIBLE HEALTH RESOURCES AND A DIVERSE, EDUCATED AND COMPASSIONATE WORKFORCE.

VALUES: COMMUNITY, EXCELLENCE, INNOVATION, PARTNERSHIP





Heather Aldrich
Branch Manager
Community Bank
Board President



Stuart Hempel
Retired, Human Resources
Board Vice-President



Dr. Nicholas Apostoleris
Tri-County Family Medicine
Board Treasurer



Tiffany Yerico
Lutheran Home and
Rehab Center
Board Secretary



Dan Ireland
President/ COO
Rochester Regional Health,
Finger Lakes Rural Hospitals



Dr. Julie Donlon-Yates
Deputy Superintendent
Genesee Valley BOCES



DeNae Gibson
Director of Nursing
WCCHS



Kaitlin Pettine
Public Health Educator/Public
Information Officer
Genesee and Orleans County
Health Departments



Jennifer Rodriguez
Director of Public Health and
Mental Health
Livingston County



Ann Battaglia
CEO
Healthy Community Alliance



Karla Gadley
Community Development
Director, Vice President
Five Star Bank



John Curry
Health Professions Outreach
and Intervention Assistant
Genesee Community College



LETTER FROM THE EXECUTIVE DIRECTOR

The year 2023 was another successful year for WNY R-AHEC. This would not be possible without our amazing staff, board members, and health care and educational partners. During the last year, we completed a strategic planning process that involved staff, board, community, and partner input. This process unveiled a revised mission, vision and values highlighted on the front cover, which will continue to drive the organization into the future.

This report highlights the impact of the R-AHEC programs in our region. In 2023, we focused on expanding our health workforce development and middle/high school education focus areas. This effort has yielded additional NYS CEU approvals, the development of a new course, Social Determinants of Health, the relaunch of Medical and Science Health (MASH) Camps since Covid, and the expansion in the number served through the AHEC Scholars Program and the Youth and Adult MHFA (YMHFA & AMHFA) Programs. There are also new programs like Providers and Teens Communicating for Health (PATCH) and Teen Mental Health First Aid (tMHFA) to tell you about!

We are beyond excited for 2024, as we prepare to celebrate our 25th anniversary! We are also rolling out our Health Professions Scholarship in 2024. This scholarship will support local graduating high school students pursuing a certificate/degree in healthcare. One way you can help is to support a young, up and coming, health professions student by donating towards the new Health Careers Scholarship Fund.

Thank you!

Melanie Rhodes, MBA
Executive Director

- 7-12 Grade Education
 - Camps/Internships
 - Career Fairs
 - Newsletters
 - Providers and Teens Communicating for Health (PATCH)
 - Teen Mental Health First Aid (tMHFA)
- AHEC Scholars
- Science Education Partnership Award (SEPA)
- Simulation Education Training (SET)
- Opioid Prevention Education Project (OPEP)

EDUCATION

- Continuing Education
 - Mental Health First Aid (MHFA)
 - Adult, Youth
 - Courses (In-person, Virtual, On-line)
 - SDOH
 - Motivational Interviewing
 - Professionalism
 - Care Coordination & Others
- Technical Assistance

WORKFORCE DEVELOPMENT



HOUSING

- Thiel Hospitality House
 - Student Rotations
 - Healthcare Professionals
 - Community
 - Airbnb

HEALTH INFORMATION TECHNOLOGY SUPPORT

- Rural Broadband Healthcare Network (RBHN)
 - Healthcare Connect Fund (HCF)
 - Connected Care Pilot Program

WNY R-AHEC STAFF



MELANIE RHODES - EXECUTIVE DIRECTOR

SARA LONGHINI - ASSOCIATE DIRECTOR

CHRISTINE CHAPPEL - ADMINISTRATIVE COORDINATOR

MELISSA MICHEL - PROGRAM COORDINATOR, PIPELINE

JASON FULKERSON - PROGRAM COORDINATOR, WORKFORCE

HEIDI BAKER - PROGRAM COORDINATOR, PIPELINE/PATCH

JENNIFER RATAJCZAK - PROGRAM COORDINATOR, MHFA

LORI KUBIK - PART-TIME PROGRAM COORDINATOR, MHFA

PETER APPLETON - PROGRAM COORDINATOR, RBHN

ANDREW MILLS - ASSISTANT PROGRAM COORDINATOR, RBHN

HOLLY GRANGER - PROGRAM ASSISTANT, RBHN



WNY R-AHEC PROGRAMS

EDUCATION

1,908 Students participated in pipeline activities

139 Schools (public/private/BOCES), receive monthly Health Career Observer Newsletters

10 Health Career Observer newsletters distributed

140 Students participated in healthcare presentations

1322 Students engaged through career fairs



AHEC SCHOLARS

7 Completed the 2-year program in August 2023, 560 training hours

16 Completed the 1st year of program in August 2023, 1,280 training hours

1,840 AHEC Scholars training hours

15 Recruited for year-one of program beginning in September 2023

13 Partnering Colleges & Universities

\$28,250 AHEC Scholars stipends awarded in 2023



AHEC Scholar
Glotilda Chemlimo, RIT
Dietetics & Nutrition

MEDICAL ACADEMY FOR SCIENCE & HEALTH CAMPS (MASH CAMPS)



“Dena showed us how to inject an orange. It was cool to figure out how to give a shot. It was fun and educational.”

Gananda MASH Camp Student

PROVIDERS AND TEENS

COMMUNICATING FOR HEALTH (PATCH)

PATCH @ WNY Rural

Pilot program started in the fall of 2023 and funded by the John R. Oishei Foundation. PATCH provides communities a foundation to improve healthcare transition and overall healthcare experiences through an innovative, youth-driven, community-based approach. The PATCH Teen Educator Model employs and empowers youth (ages 14-18) to facilitate workshops for peers and providers.

10 Patch Educators

4 Counties
Genesee, Livingston, Orleans, & Wyoming

7 School Districts
Attica, Batavia, Byron-Bergen, Caledonia-Mumford, Keshquea, Pavilion & Warsaw

53
Youth Participants

Camps
5

222
Hours of Camp Programming





WNY R-AHEC PROGRAMS

OPEP, OPIOID PREVENTION EDUCATION PROJECT



SCIENCE EDUCATION PARTNERSHIP AWARD (SEPA)



The Metagenomics Education Partnership: Harnessing the power of Microbial Genome Sequencing. Students and teachers have the opportunity to learn how to use metagenomic data tools to conduct research about the organisms in local waterways in partnership with Dr. Koury at the University of Buffalo teaching high school students how to prep water samples and load them in sequencers.

FIVE YEAR PROGRAM 2020-2025

TWO SCHOOLS; AVON & MONROE BOCES

CAPSTONE PROJECT; 120 STUDENTS

SIMULATION EDUCATION TRAINING (SET)

75 Students participated in Simulation Education Training

105.5 Hours of Simulation Education Training completed by AHEC Scholars and students





2023 HIGHLIGHTS



OPEP

Opioid Prevention Education Project



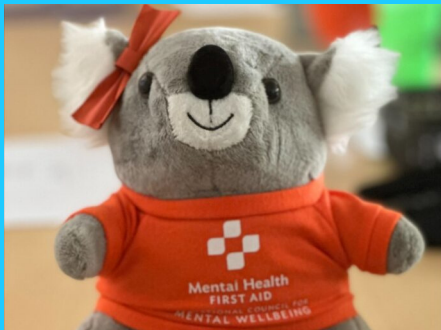
PATCH

Providers And Teens Communicating for Health



Pipeline

Career Fairs



Mental Health First Aid

Teen, Youth & Adult MHFA



Thiel Hospitality House

Housing for medical students and health care professionals



MASH Camps

Medical Academy for Science & Health Camp



AHEC Scholars

Kevin Gemy, MCC Radiology



Pipeline

Health Careers School Presentations



SET

Simulation Education Training



2023 HIGHLIGHTS



Five Star Bank

Provided \$10,000 for AHEC Scholar Stipends



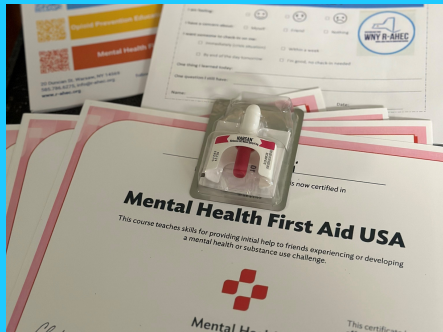
National AHEC Organization (NAO)

Dwain Harris, CEO of NAO visits R-AHEC



Sunset Festival

Hosted the Annual WCCHS Event at the Hospitality House



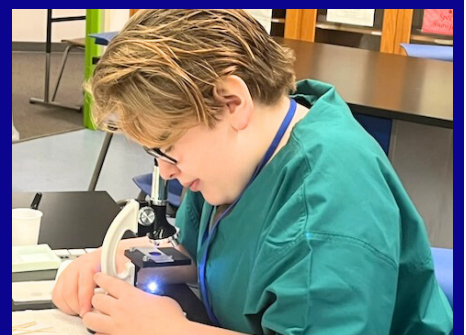
Mental Health First Aid

Teen MHFA



2023 NAO Biennial Conference

Executive & Associate Director attend in Salt Lake City, UT



MASH Camps

Medical Academy for Science & Health Camp



PATCH

Providers And Teens Communicating for Health



Pipeline

GLOW With Your Hands Health Career Fair



Staff Retreat

Welcomed by Beaver Hollow for Team Building & Education



WNY R-AHEC PROGRAMS

MENTAL HEALTH FIRST AID (MHFA) TRAINING

**Training Adult, Youth & Teen Mental Health First Aid (MHFA)
46 Trainings, 478 Trained, 3031 Training Hours**

Mental Health First Aid (MHFA) through the National Council for Mental Wellbeing, is an international, evidence-based program that teaches people to identify, understand and respond to signs and symptoms of mental health and substance use challenges. Teen MHFA builds a powerful community of teens ages 15-18 by teaching them how to support a friend or classmate.

1 in 5
teens has had a serious mental health disorder at some point in their life.




49.5%
of adolescents ages 13-18 have a mental disorder.

2nd
Suicide is the second-leading cause of death among adolescents ages 15-19.



Adult & Youth MHFA Training teaches how to apply the ALGEE action plan:

- **Assess** for risk of suicide or harm.
- **Listen** nonjudgmentally.
- **Give** reassurance & information.
- **Encourage** appropriate professional help.
- **Encourage** self-help & other support strategies.



"I honestly really liked this course and I think this is very helpful for me because of what I want to do when I'm older to be a psychologist."

"I was just a guest in the class for my study hall but from the two classes I have been in, I love it, she really focuses on the most important facts of mental health."

tMHFA Participants



"As a youth, I struggled with my mental health and the topics covered in MHFA are handled very mindfully."

"I feel more confident that I understand signs of mental health and can refer individuals accordingly."

Adult & Youth MHFA Participants





WNY R-AHEC PROGRAMS

WORKFORCE DEVELOPMENT

209 Individuals Trained
463 Training Hours

In the following courses and partnerships:
Professionalism, Social Determinants of Health
Care Coordinator Certificate Program
The History of Health Disparities and Current Impacts
Mental Health

Partnered with:
WNYICC, Compliance Training
STWHWP, Care Coordinator Certificate
SET Program, Christie VanHorne
NYS CMA Annual Conference



NYSED Approved Provider for
Continuing Education in:
Social Work, Physical Therapy,
Occupational Therapy, Mental Health

104
Credit
Hours
Awarded

TECHNICAL ASSISTANCE

Western New York Rural AHEC is a technical assistance provider for the Rural Public Health Workforce Training Program. This is a unique grant program in partnership with that National AHEC Organization, offered by the Federal Office of Rural Health Policy, focused on expanding public health capacity by supporting health care job development, training and placement in rural and tribal communities. The grant is spread amongst four tracks: Community Health Support, Health IT and/or Telehealth Technical Support, Community Para-Medicine, Case Management Staff and/or Respiratory Therapists.

TECHNICAL ASSISTANCE FOR
TEN GRANTEE SITES

LOCATED IN GEORGIA, ILLINOIS, MICHIGAN, MISSOURI,
NEW YORK, OREGON, SOUTH CAROLINA, TENNESSEE,
SOUTH DAKOTA, VIRGINIA

TWO SITE VISITS:
CHAUTAUQUA HEALTH NETWORK IN
JAMESTOWN, NY

MEDICAL UNIVERSITY OF SOUTH CAROLINA IN
CHARLESTON, SC

ANNUAL PROGRAM MEETING IN WASHINGTON, DC



WNY R-AHEC PROGRAMS

HEALTH INFORMATION TECHNOLOGY SUPPORT, RURAL BROADBAND HEALTHCARE NETWORK (RBHN) \$14,274,070.26 IN TOTAL COMMITMENTS SINCE FY2015

176 ACTIVE
SITES

23 COUNTIES
IN NY

235
CIRCUITS

3 STATES
NY, PA, MA

The Western New York Rural Area Health Education Center's Rural Broadband Healthcare Network (RBHN) is a consortium of health care providers (HCPs) in rural, urban and medically underserved areas that qualify and participate in the FCC's Healthcare Connect Fund. Eligible facilities include Rural Health Clinics, Hospitals, FQHCs, Health Departments, Skilled Nursing Facilities, Teaching Hospitals, Community Mental Health Centers, Data Centers, and Admin Offices. These HCPs can save up to 65% off their broadband, fiber and equipment services.

THIEL HOSPITALITY HOUSE, HOUSING

23 Medical Students
& Vet Students

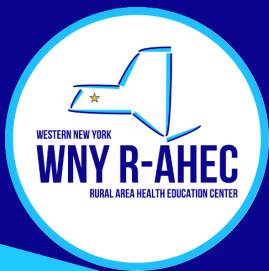
25 Healthcare Professionals
& Community Guests

185 Airbnb Guests

Over 587 nights provided to healthcare students, healthcare professionals & community members, 63% of occupancy serving the R-AHEC mission

Only 37% utilized by Airbnb guests





2023 FINANCIAL REPORT

Income:

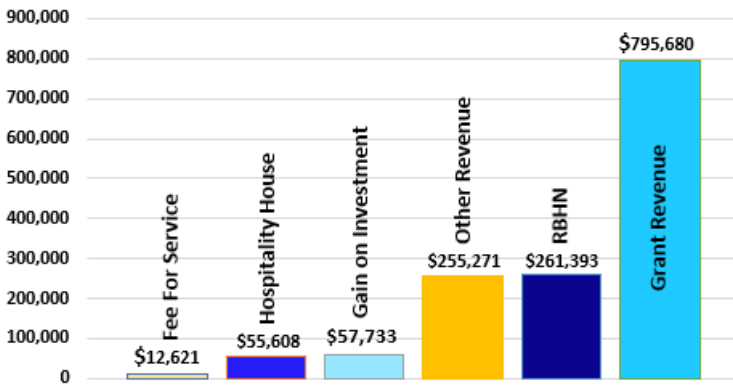
Grant Revenue	\$795,680
RBHN	\$261,393
Other Revenue	\$255,271
Fee For Service	\$12,621
Hospitality House	\$55,608
Gain On Investment	\$57,733
Total Revenues	\$1,445,593

Expenses:

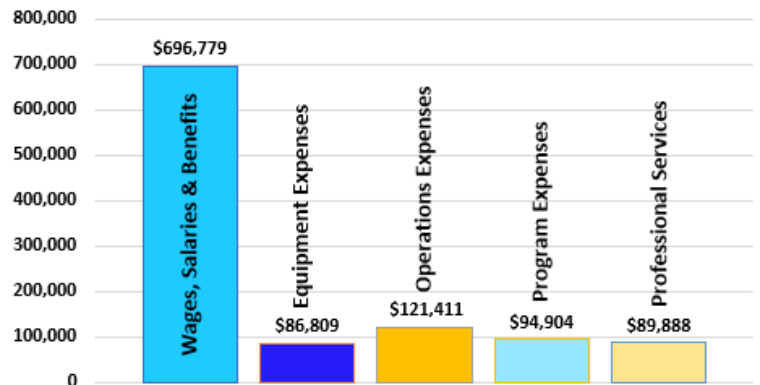
Wages, Salaries & Benefits	\$696,779
Equipment Expenses	\$86,809
Operations Expenses	\$121,411
Program Expenses	\$94,904
Professional Services	\$89,888
Total Expenses	\$1,089,790
Net Income	\$355,802

**unaudited financials*

WNY R-AHEC Income



WNY R-AHEC Expenses



INVESTMENT AGENCY ACCOUNT AS OF 12/31/23

\$377,276.97

SCHOLARSHIP ACCOUNT AS OF 12/31/23

\$32,875.81

FUNDERS

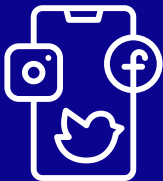
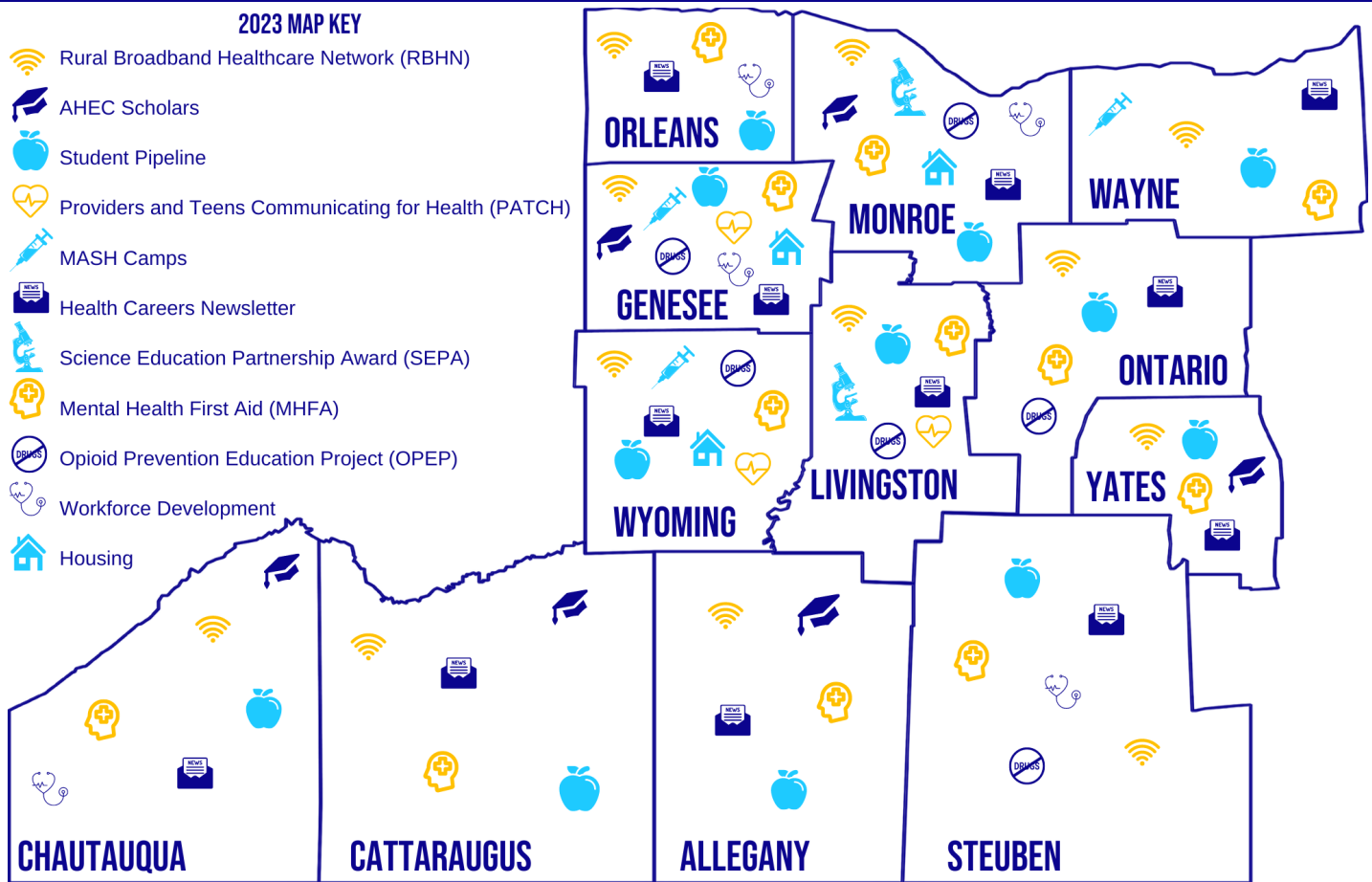
- American College of Rheumatology, Lupus Grant
- DCJS Securing Communities Against Hate Crimes (SCAHC) Grant Program
- Department of Health and Human Services SAMHSA, Mental Health Awareness Training Grant
- Five Star Bank
- Garman Family Foundation administered by the Community Foundation for Greater Buffalo
- Health Research, Inc., Small Wellness Mini Bid Grant
- HRSA, Federal HRSA (OPEP, SET)
- HRSA Health Careers Opportunity Program (HCOP) in Partnership with D'Youville University
- John R. Oishei Foundation
- National AHEC Organization, Rural Public Health Workforce Training Network Program
- NYS Department of Health
- Rural Housing Service, USDA
- The Margaret L. Wendt Foundation
- University of Buffalo Foundation, SEPA
- Wayne County Community Endowment at Rochester Area Community Foundation
- Western New York Foundation
- Workforce Development Institute (WDI)
- Wyoming Foundation, CFGB



PROGRAM MAP

2023 MAP KEY

- Rural Broadband Healthcare Network (RBHN)
- AHEC Scholars
- Student Pipeline
- Providers and Teens Communicating for Health (PATCH)
- MASH Camps
- Health Careers Newsletter
- Science Education Partnership Award (SEPA)
- Mental Health First Aid (MHFA)
- Opioid Prevention Education Project (OPEP)
- Workforce Development
- Housing



FOLLOW US



www.facebook.com/WNYRuralAHEC

www.twitter.com/WNYRAHEC

www.linkedin.com/company/wny-rural-ahec

www.instagram.com/wny_rahec

www.instagram.com/thielhospitalityhouse

CONTACT US



20 Duncan Street,
Warsaw, NY 14569

585-786-6275

info@r-ahec.org

www.r-ahec.org

This organization is supported in part by the Health Resources and Services Administration (HRSA) of the U.S. Department of Health and Human Services (HHS) under Grant number U77HP16459 and project title New York State Area Health Education Center System. The information or content and conclusions are those of the author and should not be construed as the official position or policy of, nor should any endorsements be inferred by HRSA, HHS or the U.S. Government.

WNY R-AHEC is an equal opportunity employer and provider