

Health Career Observer



The Official Newsletter of the WNY R-AHEC

May 2023

Epidemiologist

Epidemiologists are public health workers who investigate patterns and causes of disease and injury and treatment methods. They seek to reduce the risk and occurrence of negative health outcomes through research, community education and health policy. They work in applied public health or in research, work for state and local governments and address public health problems through education outreach and survey efforts in communities. Research epidemiologists typically work for universities or in affiliation with federal agencies, such as the Centers for Disease Control and Prevention (CDC) or the National Institutes of Health (NIH). Epidemiologists who work in private industry may conduct research for health insurance providers or pharmaceutical companies. Those in nonprofit companies often focus on public health advocacy. Epidemiologists typically specialize in one or more areas such as chronic diseases, environmental health, genetic and molecular epidemiology, infectious diseases, injury, maternal and child health, mental health, public health preparedness and emergency response and veterinary epidemiology.

Average Annual Pay-\$78,830



"The most rewarding part of my job is serving the public....You know that the work you're doing has an effect on the population that you serve." -Stephanie Parenti, MPH

How Do I Become an Epidemiologist?

**PROJECTED JOB
MARKET GROWTH:
26% BY 2031**

Epidemiologists typically need at least a master's degree in public health (MPH) or a related field. Some complete a doctoral degree in epidemiology or medicine. A master's degree in public health with an emphasis on epidemiology is common. Epidemiologists who direct projects and those that work as teachers in colleges and universities often have a Ph.D. or medical degree in their field. To enter graduate programs in epidemiology, applicants typically need a bachelor's degree in a field such as biology, public policy and social services or social science.

What Does an Epidemiologist Do?



Plan and direct studies of public health problems to find ways to prevent or treat.



Collect and analyze data.



Communicate findings to health practitioners, policy makers and the public.



Manage programs through planning, monitoring, and seeking ways to improve.



Supervise professional, technical and clerical personnel.



Write grant proposals to fund research.



WNY R-AHEC, 20 Duncan St, Warsaw, NY 14569

585-786-6275 ebrauen@r-ahec.org

<https://www.r-ahec.org/>

Follow us on:



This organization is an Equal Opportunity Provider and Employer

Health Career Observer



The Official Newsletter of the WNY R-AHEC

May 2023

A Professional Account

Stephanie Parenti, MPH, and Epidemiologist for the New York State Department of Health shares her personal insight.

What is the most rewarding part of your job?

"The most rewarding is serving the public. Studying and investigating patterns and causes of disease is fulfilling because you know that the work you're doing has an effect on the population that you serve. I also love that I get to work in a field that I'm really interested in, love science and epidemiology, so getting to learn new things about them while I work is a bonus! Epidemiology is also an exciting field because it is always evolving and you can work in many different specialties based on your interests."

What is the most challenging?

"In my opinion, the spread of misinformation. Many people get and are given information about health and science from unreliable sources. Misinformation can also spread at incredible speeds in today's day and age on social media and other websites. This can harm people's health and undermine the work we do in public health. We need to limit the impact of misinformation for the health of everyone."

What do you wish you knew back in school that you know now?

"Self-care is of utmost importance! School is such a busy time that it can be easy to forget to take time to truly care for yourself. Nurture your interests and passions and find time to do things that bring you joy. It's important to slow down sometimes, identify and lean on your support systems, and check in with yourself regularly."

Anything else you want to share?

"A career in public health can allow you to address many pertinent issues facing the world. There are so many different avenues of public health that you can explore. Public health is interdisciplinary and needs people from all different backgrounds to draw on their strengths to come together and solve problems."

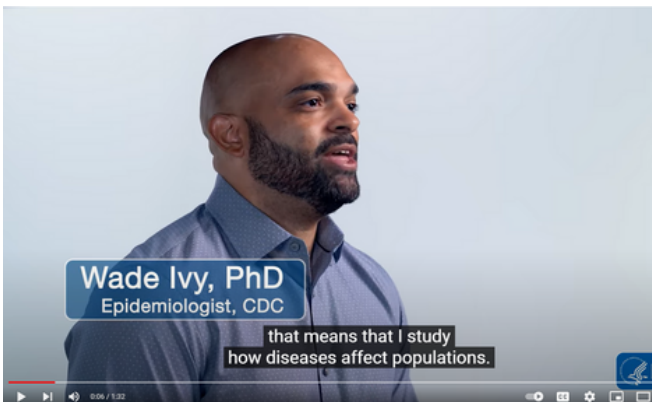


Click on the image for an account of Epidemiology from Career OneStop

<https://www.youtube.com/watch?v=vGXPzV9e-jw>



Scan Me



Click on the image for a personal account from an Epidemiologist

<https://www.youtube.com/watch?v=tYx-fO5hMA4>



Scan Me

For more information visit the US Bureau of Labor Statistics
www.bls.gov/ooh/life-physical-and-social-science/epidemiologists.htm

Health Career Observer



The Official Newsletter of the WNY R-AHEC

May 2023



AHEC SCHOLARS
Virtual Information Session
June 1, 3pm

Are you a health profession student interested in learning more about high quality, patient centered care?

- ⊕ The NYS AHEC Scholars Program goal addresses the social, financial and cultural factors that influence health
- ⊕ 2-year program for those in their last two years of study
- ⊕ Earn a \$1000 annual stipend and \$2,000 by program completion

PLEASE JOIN US ON JUNE 1, AT 3PM TO LEARN MORE!

Register Today!
<https://rahec.zoom.us/j/7866666666>



AHEC SCHOLARS



Contact
Erin Brauen
ebrauen@rahec.org
585-786-6275



AHEC SCHOLARS
Now Enrolling



Health Profession Students Gain Knowledge of the Social and Cultural Factors that Influence Health



- ⊕ Two-Year Program
- ⊕ Earn Up to \$2,000
- ⊕ Support Quality Patient Care in Rural and Underserved Communities
- ⊕ Program Components Include
 - Didactic Studies
 - Hands on Learning
 - Group Case Conferencing



APPLY TODAY!

Visit the AHEC Scholars site for more information
nysahec.org/our-programs/new-nys-ahec-scholars-program/

For more information contact
Erin Brauen | ebrauen@rahec.org | 585-786-6275

